

# 6 Quick Facts About the New Dues Assistance Policy



## 1 Caring For Our Sisters



THE HEART OF THE ORDER IS COMMUNITY.

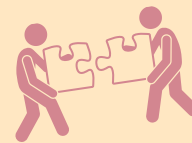
Daughters are women who lovingly support one another through all of life's circumstances. Our Dues Assistance Policy reflects this commitment to care. When a Daughter faces financial difficulty, she is not alone—her sisters at the chapter, diocesan assembly, provincial assembly, and national levels stand ready to help ensure she can remain active and fully involved.

No Daughter should feel she cannot continue to live into her responsibility of membership because of financial difficulties, nor should she feel the need to resign from The Order because of inability to pay dues.

This policy provides a compassionate process for offering assistance, grounded in confidentiality, dignity, and mutual care, whether the need is temporary or long-term.

## 2 Combined Dues Policies

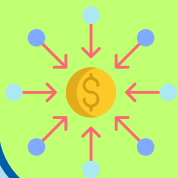
The updated Dues Assistance Policy now includes both types of support:



- current dues assistance
- permanent dues assistance (formerly called Dues Relief)

Having one policy and a single application makes the process easier for Daughters and leaders at every level.

## 3 How Is Dues Assistance Funded?



Dues Assistance is made possible through the generosity of others - individual Daughters, chapters, clergy, diocesan and provincial assemblies, and the national dues assistance account. Donations to local or national dues assistance accounts ensure that resources are available to help Daughters in need of financial support.

## 4 Why Are We Concerned About Annual Dues?

Annual dues support the daily operations of The Order and help ensure that our ministries, programs, and member services continue to thrive.

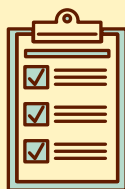


Overall, dues make it possible for The Order to function smoothly, provide meaningful support to members, and sustain the mission we share.

## 5 Prerequisites For Permanent Dues Assistance Have Not Changed

The prerequisites for Permanent Dues Assistance have not changed from those for the former Dues Relief option. Daughters must be:

- current with their dues (dues assistance can help),
- permanently incapacitated – cannot manage her own personal care and finances,
- unable to pay her dues, and
- unable to receive financial assistance from her chapter.



It is essential that Daughters applying for dues assistance meet **ALL** prerequisites to ensure that we can allocate resources fairly, enabling us to assist every member in genuine need.

## 6 Daughters Receiving Permanent Dues Assistance Are In Good Standing



In addition to remaining in good standing, a Daughter approved for permanent dues assistance, is exempt from paying dues. To keep the membership rolls updated, her chapter president must complete an annual verification of her contact information.

For More Information go to [www.doknational.org/page/Policies](http://www.doknational.org/page/Policies) or call 770-517-8552